

SilviPak

Sustainable packaging



SilviPak - sustainable packaging

The SilviPak package offers a truly competitive choice from an environmental point of view. Compared to an equivalent plastic package, SilviPak reduces both weight and oil dependence. Produced mainly from wood fibres it also contributes to the reduction of CO₂ emissions.

Forests give a large contribution in storing CO₂. Making certain that the forests SilviPak source from are growing, ensures there is plenty of oxygen and a reduction in CO₂. The wood fibre used to produce the SilviPak packages come from sustainable managed forests where more trees are planted than are felled.



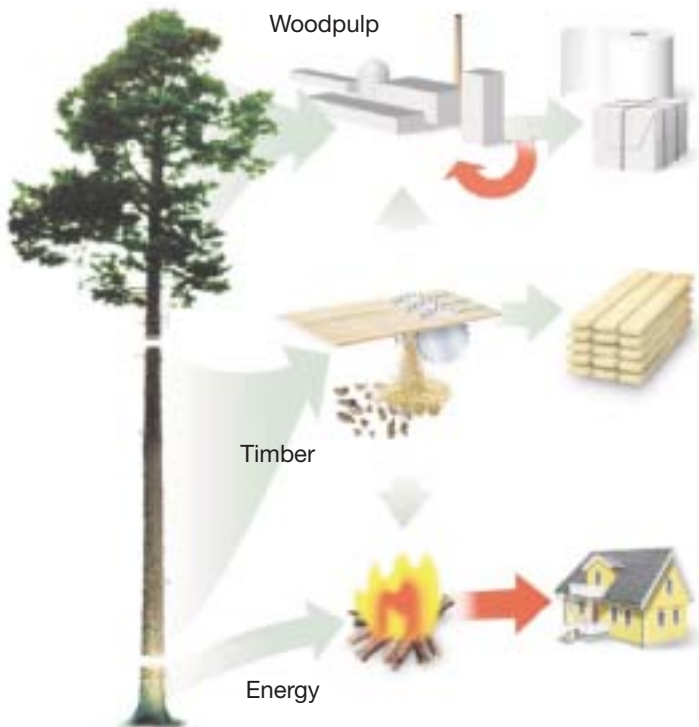
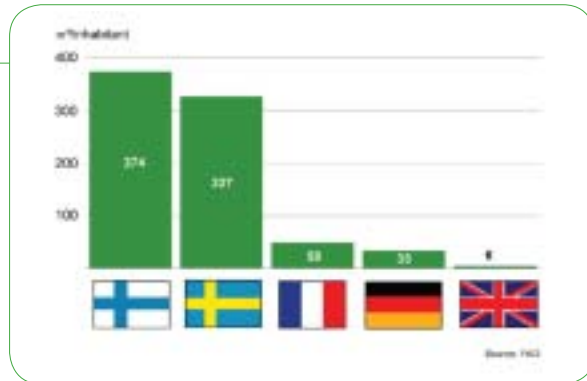
CU-COC-804603

© 1996 Forest Stewardship Council A.C.

The FSC Logo identifies forests which have been certified in accordance with the rules of the Forest Stewardship Council.

Plenty of wood

Sweden, where SilviPak sources most of its wood from, has vast forests and very few people. A comparison of the situation in Sweden with conditions in certain other European countries, shows that there are 327 cubic metres of wood per Swede. In Great Britain the figure is as low as 6 cubic metres per inhabitant.



100% of the tree is put to use



SilviPak reduces weight

The SilviPak package provides more than 30% weight reduction compared to an equivalent plastic package. A standard plastic CPET weighs 17g, compared to the only 12g of a SilviPak 3002 package.

SilviPak reduces weight
More than 30% weight reduction compared to an equivalent plastic package.




CPET 17g SilviPak 3002 12g

The image shows two square trays side-by-side. The one on the left is a dark, solid-colored CPET tray. The one on the right is a SilviPak 3002 tray, which has a white paper base and a thin black plastic barrier on top.

SilviPak reduces oil consumption

SilviPak reduces oil consumption and oil dependence by using only a thin plastic barrier. While it takes 20g to make a standard plastic tray, SilviPak can make 15 trays with the same amount of plastic.

One 20g plastic tray equivalent to 15 SilviPak trays



20g oil

Plastic tray SilviPak trays

The diagram illustrates the oil consumption difference. On the left, a single black plastic tray is shown with a single drop of oil being poured into it, labeled '20g oil'. On the right, 15 smaller, stacked SilviPak trays are shown, representing the equivalent capacity of the plastic tray.

SilviPak is easy to recycle

SilviPak can be recycled together with other paper products in the post-consumer waste stream. If needed, the barrier film can be easily removed and recycled together with other plastic products. Our long-term aim is to make the entire SilviPak package compostable.

The paper tray weighs only 10g

The plastic film weighs only 2g



SilviPak – Rottneros company background

SilviPak is part of the Rottneros Group, one of the world's leading specialist companies working with the development and production of paper pulp for the open market. The Group is listed on the Stockholm Stock Exchange, has around 750 employees and a turnover of SEK 2,700 million.

SilviPak

Sustainable packaging solutions



P.O. Box 600 SE-194 26 Upplands Väsby, Sweden
Visiting address: Kanalvägen 16, Infra City

Phone: +46 (8) 590 010 00
Fax: +46 (8) 590 010 01
E-mail: info@silvipak.com
www.silvipak.com